



# PRODUCTS

Precision steel tubes  
Tube technology

# PRECISION STEEL TUBES

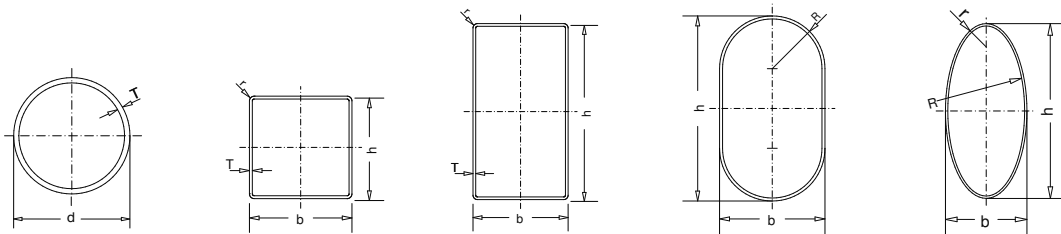
MESU produces longitudinally welded precision steel tubes according to DIN EN 10305-3 and DIN EN 10305-5. These are characterised, in particular, by tight tolerances and an excellent surface quality. In addition to material used in standard grades such as DC01, E235 or E355 hot and cold strip, we also process high-strength and ultra high-strength steels such as dual-phase steel. Tubes are delivered in the states +CR1, +CR2, +N and +A depending on their respective purpose of use.

MESU's system and process quality is fully compliant with the requirements of ISO/TS 16949. The ISO/TS 16949 certification attests to our proven quality performance as a trusted partner and supplier to the automotive industry.

Our product range includes round, square, and oval tubes with outer diameters from 6 to 60 mm, which can be manufactured in any special cross-section according to customer requirements, with wall thicknesses ranging from 0.8 up to a maximum of 3.0 mm. Upon request, the tubes can be supplied with a scarfed internal weld seam. A detailed table of our dimensions can be found on our website [www.mesu.de](http://www.mesu.de).

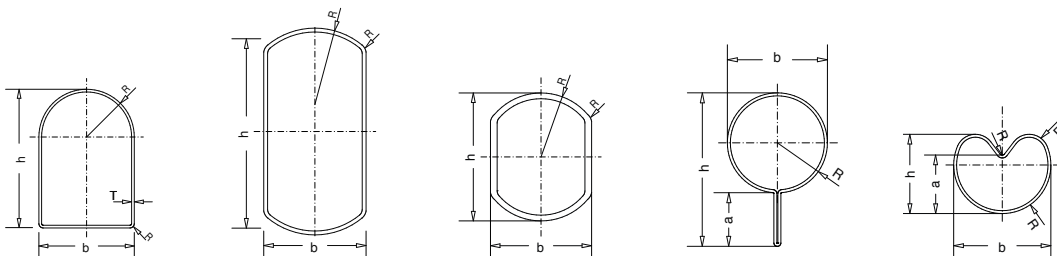
## WELDED PRECISION STEEL TUBES

- Round tube
- Square tube
- Rectangular tube
- Flat half-round tube
- Elliptical tube



## SPECIAL PROFILES

We manufacture customized products for a wide range of industries.



## CUTTING

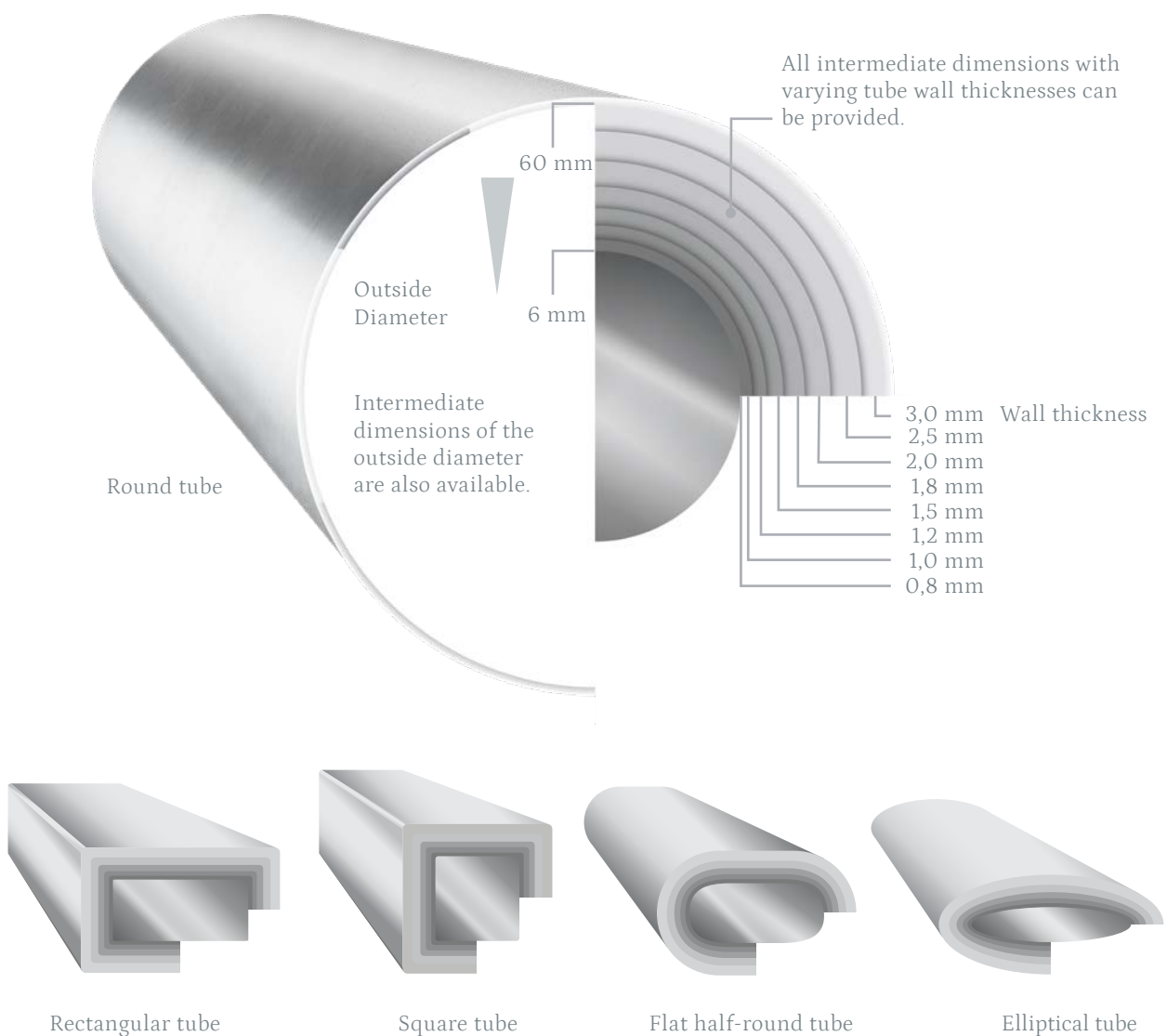
Depending on production requirements, various sawing centers and tube saws are available, where sawing, deburring, washing, and drying are carried out in an interconnected process.

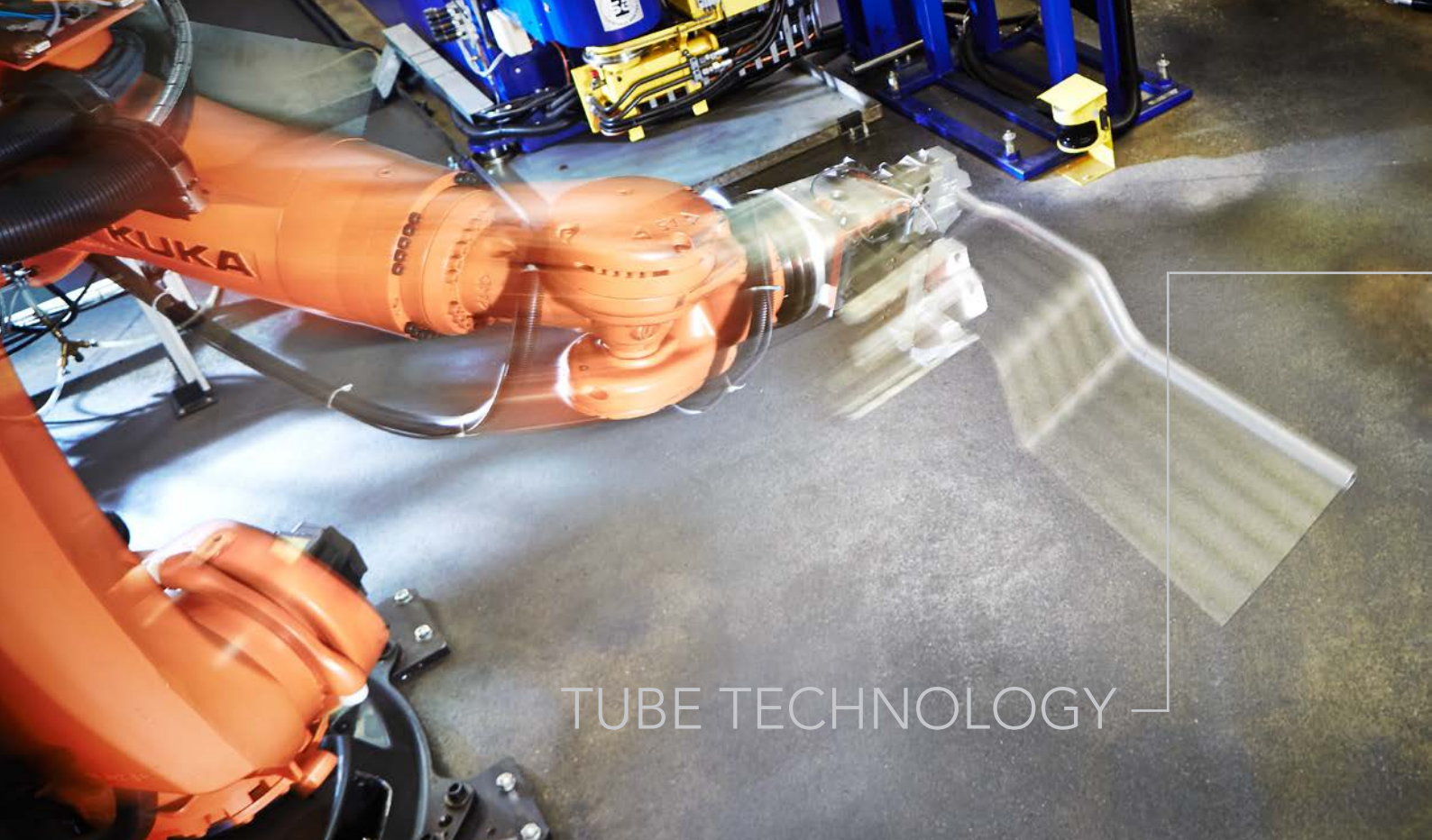
## SURFACETECHNOLOGY

We offer the following surface treatments in conjunction with our partners:

- Rough and fine grinding
- Polishing and zapon-varnishing
- Painting and coating according to RAL
- Brass, nickel and chromium-plating
- Electro-galvanising or hot-dip galvanising
- Plastic extrusion

## TUBE SIZES AND WALL THICKNESS





## TUBE TECHNOLOGY —

### CUTTING

Our modern sawing centers allow tubes to be cut precisely from production lengths to fixed lengths in line with customer requirements. After sawing, further processing steps can be carried out. These include, in particular, brush deburring (internal and external), as well as washing with subsequent drying and packaging.

### LASER

Our state-of-the-art laser systems allow us to process tubes and profiles made from steel, stainless steel, and aluminum with outer diameters or side lengths of up to approx. 150 mm and wall thicknesses of up to 5 mm. Laser cutting technology sets new standards in design and manufacturing. We are pleased to contribute our expertise to your products, as the way tubes and profiles are designed plays a decisive role in achieving high productivity and process reliability in laser-cut components.

### BENDING TECHNOLOGY

Tube bending according to individual design specifications and customer requirements, performed on semi- and fully automated CNC bending machines and bending presses, with a machinery fleet of 15 tube processing machines.

### SURFACETECHNOLOGY

Surface finishing according to customer requirements, such as:

- Grinding
- Powder coating
- Cathodic dip coating (KTL coating)
- Electroplating (zinc plating, chrome plating)



## TUBE DIMENSIONS

Precision tube processing  
from 4 mm up to 70 mm  
in diameter.

## MATERIALS

Versatile processing of  
unalloyed and alloyed  
steels, aluminum, brass,  
and copper.

## CERTIFIED QUALITY

ISO/TS certified manufacturing  
in compliance with ISO  
tolerances according to ISO  
2768-m – with the option of  
tighter tolerance classes upon  
request. ISO/TS 16949 certifica-  
tion ensures maximum process  
reliability and product quality.

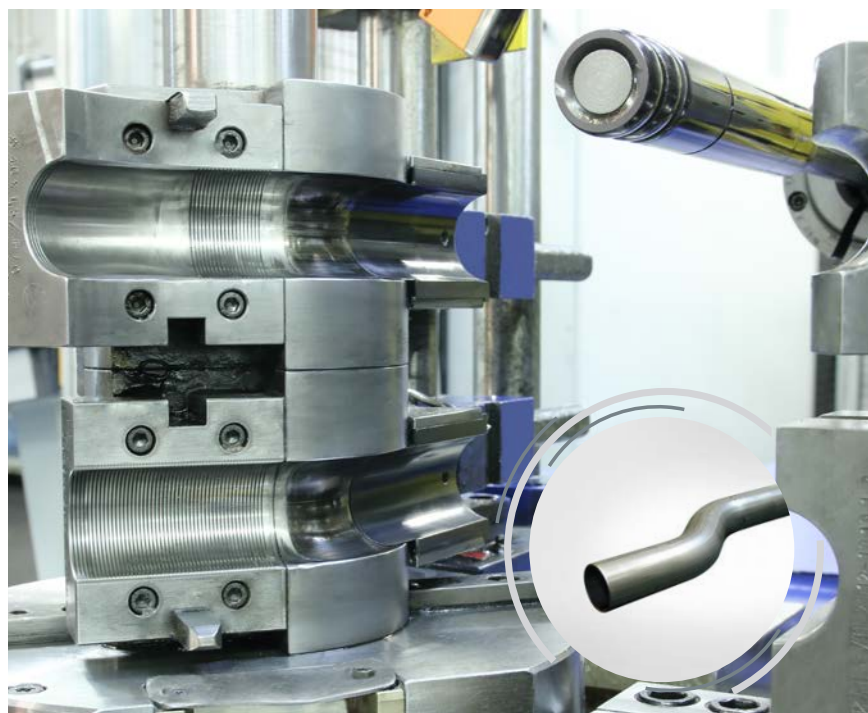
## WELDING AND SOLDERING TECHNOLOGY

Completion of individual components into assemblies or semi-finished parts using various welding techniques:

- Manual welding
- Welding robots
- Welding machines
- Spot welding
- TIG welding
- MAG welding

## STAMPING AND FORMING TECHNOLOGY

- Notching of tube ends for  
various tube diameters and  
angles according to  
customer specifications
- Swaging
- Expanding / reducing
- Flaring
- Thread rolling / tapping
- Contour embossing / trimming
- Flanging
- Piercing on mandrel and  
countersinking



# TUBE TECHNOLOGY —

## YOU WILL FIND OUR TUBES ALMOST EVERYWHERE

For example our precision steel tubes are used in the following sectors:

### LEISURE

Bicycles, garden tools, fitness equipment, exercise machines, lawn mower handles, tents, tanning beds ...

### FURNITURE

Chair frames, computer desks, school furniture, small furniture, shelving systems...

### LIGHTNING

Tubes and fittings, lighting components, threaded tubes, medical lighting ...

### MEDICALE

Microscope holders, functional cabinets, IV poles, walking aids ...



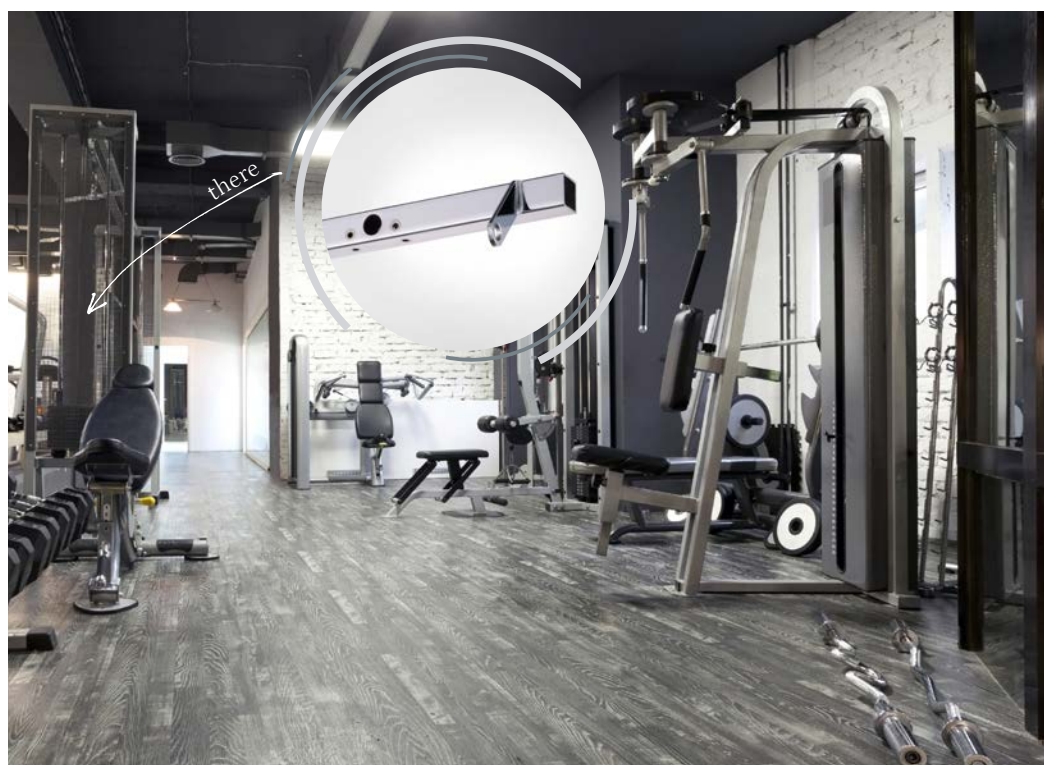


## AUTOMOTIVE

Headrests, seat frame parts, dashboard carriers, seat belt tensioners, luggage racks, pressure lines, thermomanagement and fluid handling ...

## TECHNICAL

Heating tubes, radiator tubes, shelving tubes, industrial vacuum cleaners, lightning conductors, tubes for drive technology ...







Metallwerk Sundern Otto Brumberg GmbH & Co. KG

Hauptstraße 191-195 · 59846 Sundern  
Tel. +49 2933 849 - 0 · Fax +49 2933 849-35  
[mesu@mesu.de](mailto:mesu@mesu.de) · [www.mesu.de](http://www.mesu.de)